

Sample Information

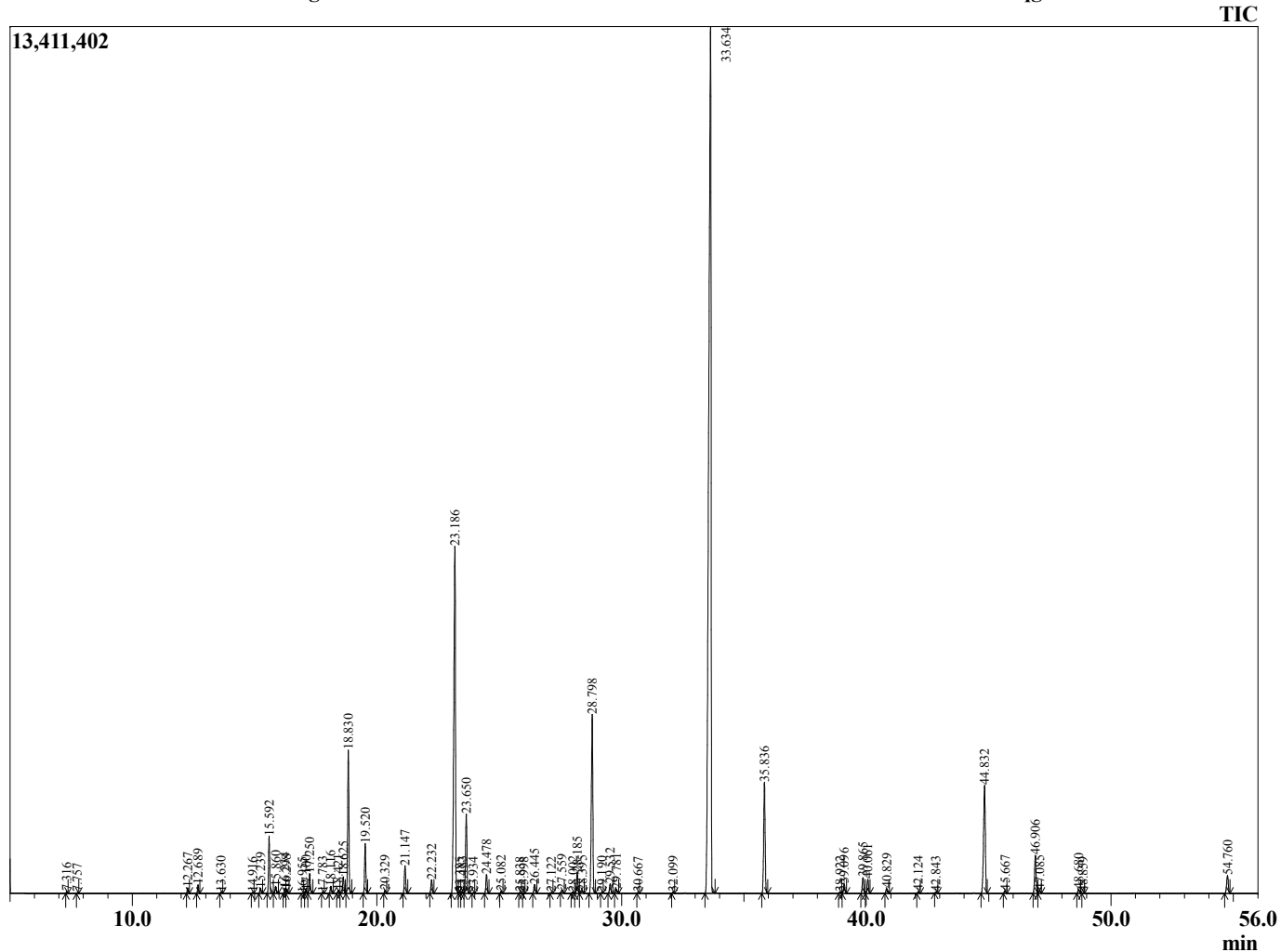
Analyzed by : Dr. Robert S. Pappas
 Analyzed : 8/18/2014 3:45:40 PM
 Sample Type : Essential Oil
 Sample Name : Lavender
 Sample ID : 14042001
 Injection Volume : 0.10
 Data File : C:\GCMSsolution\Data\EOU\Lavender\Lavender 14042001.qgd



Peak Report TIC

R.Time	Name	Area%
7.316	Butyl acetate	0.04
7.757	Hexane, 1-methoxy-	0.02
12.267	Thujene <alpha->	0.14
12.689	Pinene <alpha->	0.22
13.630	Camphene	0.04
14.916	Sabinene	0.03
15.239	Pinene <beta->	0.17
15.592	3-Octanone	1.64
15.860	Myrcene	0.20
16.234	Butyl butanoate	0.15
16.298	3-Octanol	0.11
16.955	Phellandrene <alpha->	0.02
17.100	3-Carene	0.09
17.250	Hexyl acetate	0.58
17.783	Cymene <ortho->	0.04
18.116	Cymene <para->	0.21
18.421	Limonene	0.09
18.625	Cineole <1,8>	0.52
18.830	Ocimene <Z-beta>	4.38
19.520	Ocimene <E-beta>	1.53
20.329	Terpinene <gamma>	0.09
21.147	Linalool oxide <cis-(furanoid)>	0.91
22.232	Linalool oxide <trans-(pyranoid)>	0.44
23.186	Linalool	14.08
23.385	Hotrienol	0.03
23.483	Propionate <hexyl>	0.04
23.650	Octen-3-yl acetate<1>	2.59
23.934	Heptyl acetate	0.02
24.478	3-Octyl acetate	0.62
25.082	Ocimene <allo>	0.07
25.838	Myroxide-trans+Nopinone	0.03
25.998	Sabinol <trans>	0.02
26.445	Camphor	0.31
27.122	ULavenderA	0.03
27.559	Lavandulol	0.10
28.002	Linalool oxide<Z-pyranoid>	0.05
28.185	Borneol	0.73
28.395	Undecatriene <(3E,5Z)-1,3,5>	0.12
28.798	Terpinen-4-ol	6.64
29.190	Cymen-8-ol <para->	0.03
29.532	Hexyl butanoate	0.33
29.781	Terpineol <alpha>	0.15
30.667	Octenyl-acetate-3E	0.03
32.099	Bornyl-formate	0.04
33.634	Linalyl acetate	49.40
35.836	Lavandulyl acetate	3.99
38.922	Hexyl tiglate	0.05
39.096	Terpendiol	0.32
39.865	Unidentified	0.56
40.061	Unidentified	0.50
40.829	ULavenderA	0.16
42.124	Geranyl acetate	0.06
42.843	Citral<drvrv>	0.03
44.832	Caryophyllene <trans>	4.73
45.667	Bergamotene <trans-alpha>	0.10
46.906	Farnesene <(E)-, beta->	1.41
47.085	Humulene <alpha>	0.10
48.680	Germacrene D	0.15
48.859	Farnesene isomer	0.02
54.760	Caryophyllene oxide	0.72
		100.00

Chromatogram Lavender C:\GCMSsolution\Data\EOU\Lavender\Lavender 14042001.qgd



Comments:

Typical Ranges of Main Components: