

Sample Information

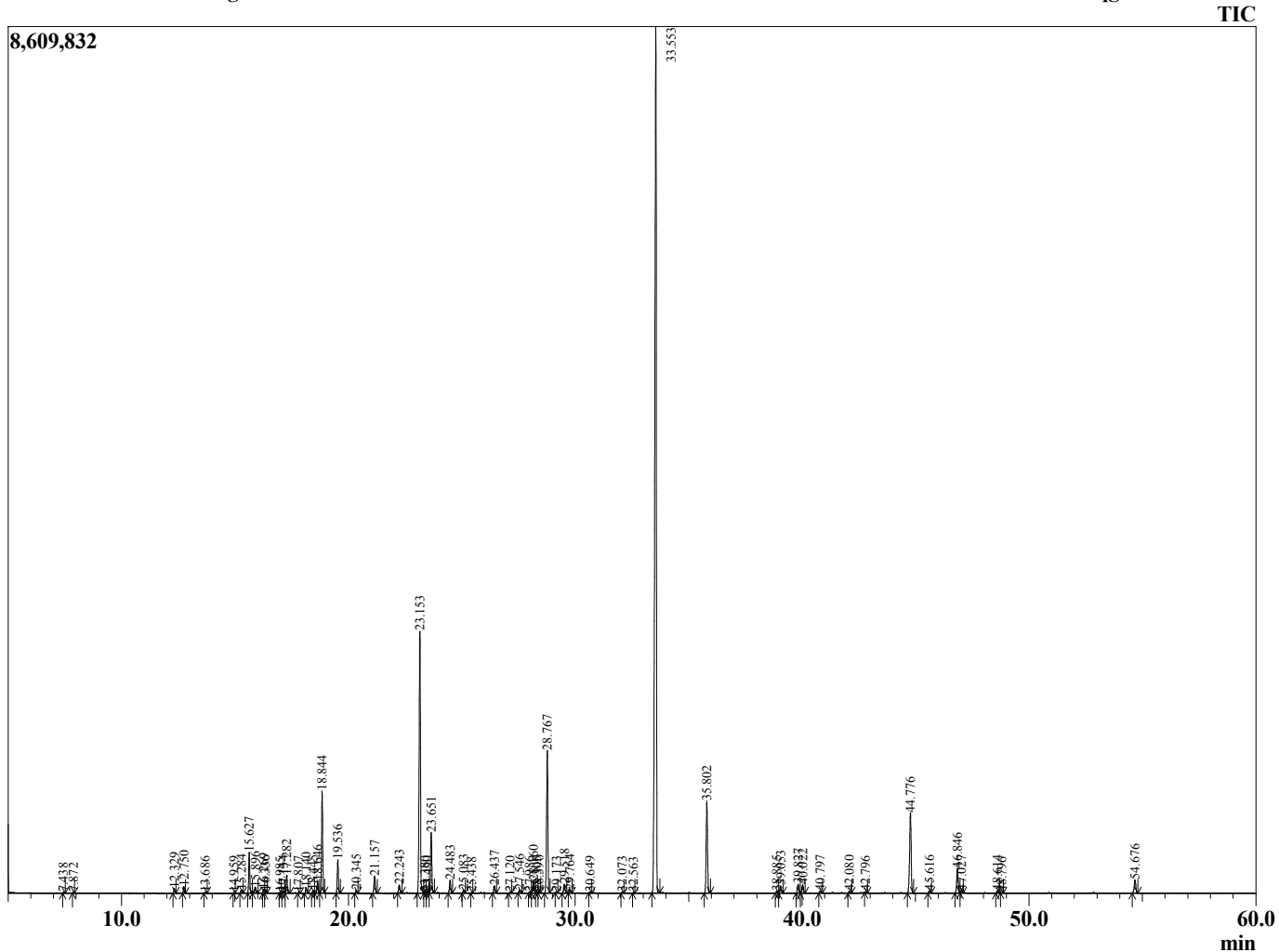
Analyzed by : Dr. Prabodh Satyal
 Analyzed : 8/17/16 10:06:27 AM
 Sample Type : Essential Oil
 Sample Name : Lavender Avice Hill
 Sample ID : 16069001
 Injection Volume : 0.20
 Data File : C:\GCMSsolution\Data\EOU\Stone Rise Farm\Lavender 16069001.qgd



Peak Report TIC

R.Time	Name	Area%
7.438	Butyl acetate	0.03
7.872	Hexane, 1-methoxy-	0.02
12.329	Thujene<alpha->	0.18
12.750	Pinene<alpha->	0.24
13.686	Camphene	0.05
14.959	Sabinene	0.03
15.284	Octen-3-ol+Pinene<beta->	0.15
15.627	Octanone<3->	1.58
15.896	Myrcene	0.26
16.269	Butyl butanoate	0.17
16.336	3-Octanol	0.10
16.985	Phellandrene<alpha->	0.02
17.134	Carene<delta-3->	0.08
17.282	Hexyl acetate	0.76
17.807	Cymene <ortho->	0.04
18.140	Cymene<para->	0.23
18.445	Limonene	0.12
18.646	Cineole<1,8->	0.54
18.844	Ocimene<(Z)-beta->	4.20
19.536	Ocimene<(E)-beta->	1.42
20.345	Terpinene<gamma->	0.13
21.157	Linalool oxide <cis-(furanoid)>	0.83
22.243	Linalool oxide <trans-(furanoid)>	0.35
23.153	Linalool	12.77
23.380	Hotrienol	0.06
23.490	Hexyl propanoate	0.07
23.651	Octen-3-yl acetate<1->	2.76
24.483	Octanol acetate<3->	0.59
25.083	Ocimene <allo->	0.13
25.438	Butyl tiglate	0.02
26.437	Hexyl isobutyrate+Camphor	0.33
27.120	5-Hexenal, 4-(acetyloxy)-4-methyl-	0.05
27.546	Lavandulol	0.15
27.986	Linalool oxide<trans->(pyranoid)	0.03
28.160	Borneol	0.59
28.305	Linalool oxide<cis->(pyanoid)	0.06
28.390	Undecatriene <(3E,5Z)-1,3,5->	0.06
28.767	Terpinen-4-ol	6.91
29.173	Cymen-8-ol<para->	0.04
29.518	Hexyl butanoate	0.44
29.764	Terpineol<alpha->	0.17
30.649	Octenyl acetate <3E->	0.03
32.073	Bornyl formate	0.05
32.563	Hexyl 2-methyl butanoate	0.03
33.553	Linalyl acetate	49.99
35.802	Lavandulyl acetate	4.53
38.885	Hexyl tiglate	0.10
39.053	Terpendiol	0.37
39.827	Peroxylinalyl acetate A	0.48
40.022	Peroxylinalyl acetate B	0.43
40.797	ULavenderA	0.10
42.080	Geranyl acetate	0.08
42.796	Citral<drvrv>	0.04
44.776	Caryophyllene <trans->	4.53
45.616	Bergamotene<alpha-trans->	0.11
46.846	Farnesene<(E)-beta->	1.31
47.027	Humulene<alpha->	0.11
48.614	Germacrene D	0.12
48.796	Neryl isobutanoate	0.03
54.676	Caryophyllene oxide	0.76
		100.00

Chromatogram Lavender Avice Hill C:\GCMSsolution\Data\EOU\Stone Rise Farm\Lavender 16069001.qgd



Comments:

Typical Ranges of Main Components: