

Sample Information

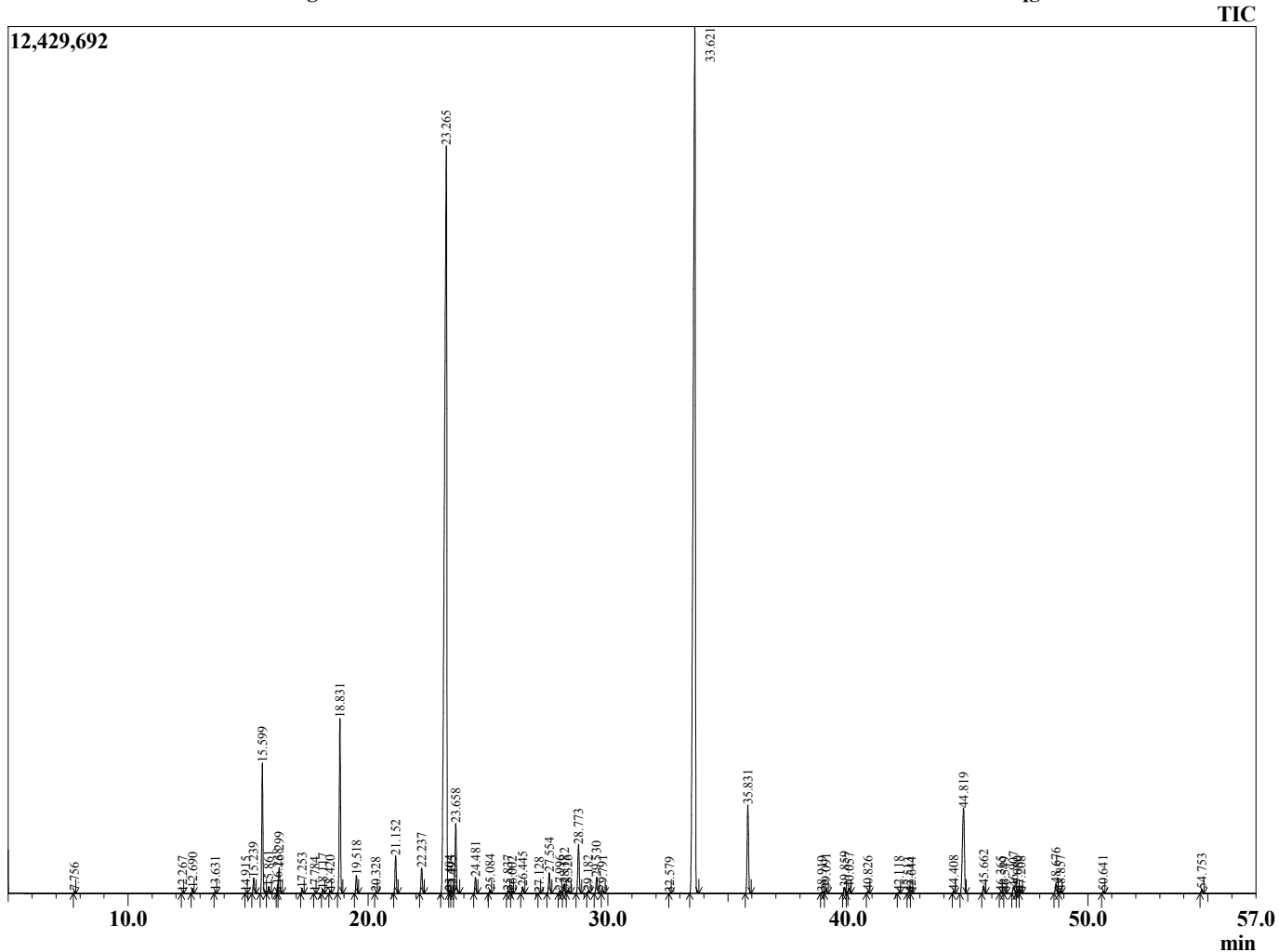
Analyzed by : Dr. Robert S. Pappas  
 Analyzed : 8/18/2014 11:28:00 PM  
 Sample Type : Essential Oil  
 Sample Name : Lavender  
 Sample ID : 14038001  
 Injection Volume : 0.10  
 Data File : C:\GCMSsolution\Data\EOU\Lavender\Lavender 14038001.qgd



Peak Report TIC

R.Time	Name	Area%
7.756	Hexane, 1-methoxy-	0.03
12.267	Thujene <alpha>	0.02
12.690	Pinene <alpha>	0.10
13.631	Camphene	0.04
14.915	Sabinene	0.02
15.239	Pinene <beta>	0.41
15.599	3-Octanone	3.10
15.861	Myrcene	0.17
16.238	Butyl butanoate	0.16
16.299	3-Octanol	0.65
17.253	Hexyl acetate	0.12
17.784	Cymene <ortho>	0.02
18.117	Cymene <para>	0.10
18.420	Limonene	0.05
18.831	Ocimene <Z-beta>	4.50
19.518	Ocimene <E-beta>	0.45
20.328	Terpinene <gamma>	0.02
21.152	Linalool oxide <cis-(furanoid)>	1.00
22.237	Linalool oxide <trans-(pyranoid)>	0.68
23.265	Linalool	35.94
23.404	Hotrienol	0.07
23.495	Propionate <hexyl>	0.06
23.658	Octen-3-yl acetate<1>	1.88
24.481	3-Octyl acetate	0.43
25.084	Ocimene <allo>	0.08
25.837	Nopinone.	0.07
26.002	Pinocarveol <trans(-)>	0.05
26.445	Hexyl isobutyrate+Camphor	0.18
27.128	ULavenderA	0.01
27.554	Lavandulol	0.58
27.996	Linalool oxide<Z-pyranoid>	0.07
28.182	Borneol	0.27
28.326	Linalool oxide <E-pyranoid>	0.10
28.773	Terpinen-4-ol	1.43
29.182	Cymen-8-ol<para>	0.06
29.530	Hexyl butanoate	0.47
29.791	Terpineol <alpha>	0.08
32.579	Hexyl <2-methyl butanoate-n>	0.01
33.621	Linalyl acetate	38.66
35.831	Lavandulyl acetate	2.60
38.919	Hexyl tiglate	0.04
39.091	Terpendiol	0.12
39.859	Unidentified	0.17
40.057	Unidentified	0.16
40.826	ULavenderA	0.05
42.118	Geranyl acetate	0.03
42.513	Bourbonene-beta	0.02
42.644	Hexyl hexanoate	0.01
44.408	Bergamotene <cis-alpha>	0.06
44.819	Caryophyllene <trans>	3.47
45.662	Bergamotene <trans-alpha>	0.22
46.365	Farnesene <Z-beta>	0.04
46.549	Santalene-beta-epi	0.02
46.907	Farnesene <(E)-, beta->	0.23
47.080	Humulene <alpha>	0.05
47.208	Sesquisabinene	0.04
48.676	Germacrene D	0.29
48.857	Farnesene isomer	0.06
50.641	Amorphene <delta>	0.05
54.753	Caryophyllene oxide	0.12
		100.00

Chromatogram Lavender C:\GCMSsolution\Data\EOU\Lavender\Lavender 14038001.qgd



Comments:

Typical Ranges of Main Components: