

Sample Information

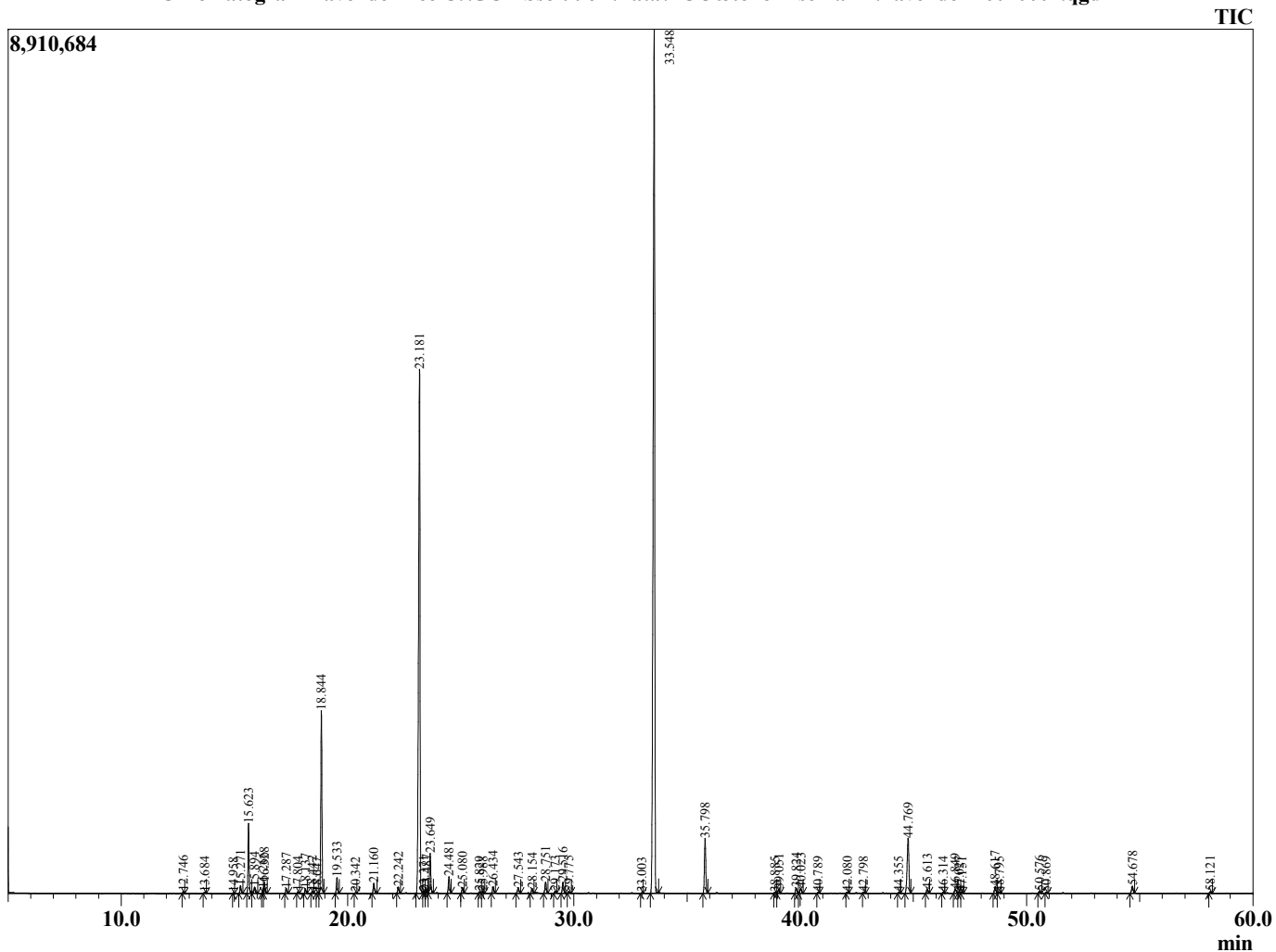
Analyzed by : Dr. Prabodh Satyal
 Analyzed : 8/17/16 12:12:25 PM
 Sample Type : Essential Oil
 Sample Name : Lavender Bee
 Sample ID : 16070001
 Injection Volume : 0.20
 Data File : C:\GCMSsolution\Data\EOU\Stone Rise Farm\Lavender 16070001.qgd



Peak Report TIC

R.Time	Name	Area%
12.746	Pinene<alpha->	0.07
13.684	Camphene	0.05
14.958	Sabinene	0.02
15.271	Pinene<beta->	0.32
15.623	Octanone<3->	2.55
15.894	Myrcene	0.27
16.266	Butyl butanoate	0.15
16.328	3-Octanol	0.45
17.287	Hexyl acetate	0.20
17.804	Cymene<ortho->	0.06
18.137	Cymene<para->	0.18
18.442	Limonene	0.07
18.647	1,8-cineole	0.02
18.844	Ocimene<(Z)-beta->	7.14
19.533	Ocimene<(E)-beta->	0.64
20.342	Terpinene<gamma->	0.03
21.160	Linalool oxide <cis-> (furanoid)	0.46
22.242	Linalool oxide <trans-(furanoid)>	0.26
23.181	Linalool	26.53
23.371	Hotrienol	0.09
23.487	Hexyl propanoate	0.13
23.649	Octen-3-yl acetate<1->	1.70
24.481	Octanol acetate<3->	0.70
25.080	Ocimene <allo>	0.24
25.829	Nopinone	0.07
25.988	Pinocarveol<trans->	0.06
26.434	Hexyl isobutyrate+Camphor	0.28
27.543	Lavandulol	0.29
28.154	Borneol	0.22
28.751	Terpinen-4-ol	0.54
29.173	Cryptone+Cymenol	0.09
29.516	Hexyl butanoate	0.51
29.775	Terpineol <alpha>	0.09
33.003	Cumin aldehyde	0.03
33.548	Linalyl acetate	47.13
35.798	Lavandulyl acetate	2.52
38.885	Hexyl tiglate	0.04
39.051	Terpendiol	0.18
39.824	Peroxylinallyl acetate A	0.26
40.023	Peroxylinallyl acetate B	0.24
40.789	Neryl acetate	0.04
42.080	Geranyl acetate	0.05
42.798	Citral<drvtv>	0.04
44.355	Bergamotene<alpha-cis->	0.06
44.769	Caryophyllene <trans>	3.31
45.613	Bergamotene<alpha-trans->	0.19
46.314	Isocaryophyllene	0.04
46.849	Farnesene<(E)-beta->	0.25
47.027	Humulene<alpha->	0.07
47.151	Sesquisabinene	0.04
48.617	Germacrene D	0.33
48.795	Neryl isobutanoate	0.07
50.576	Amorphene <delta>	0.12
50.869	Isobicyclogermacrene	0.04
54.678	Caryophyllene oxide	0.38
58.121	Cadinol <epi-alpha>	0.08
		100.00

Chromatogram Lavender Bee C:\GCMSsolution\Data\EOU\Stone Rise Farm\Lavender 16070001.qgd



Comments:

Typical Ranges of Main Components: