

Sample Information

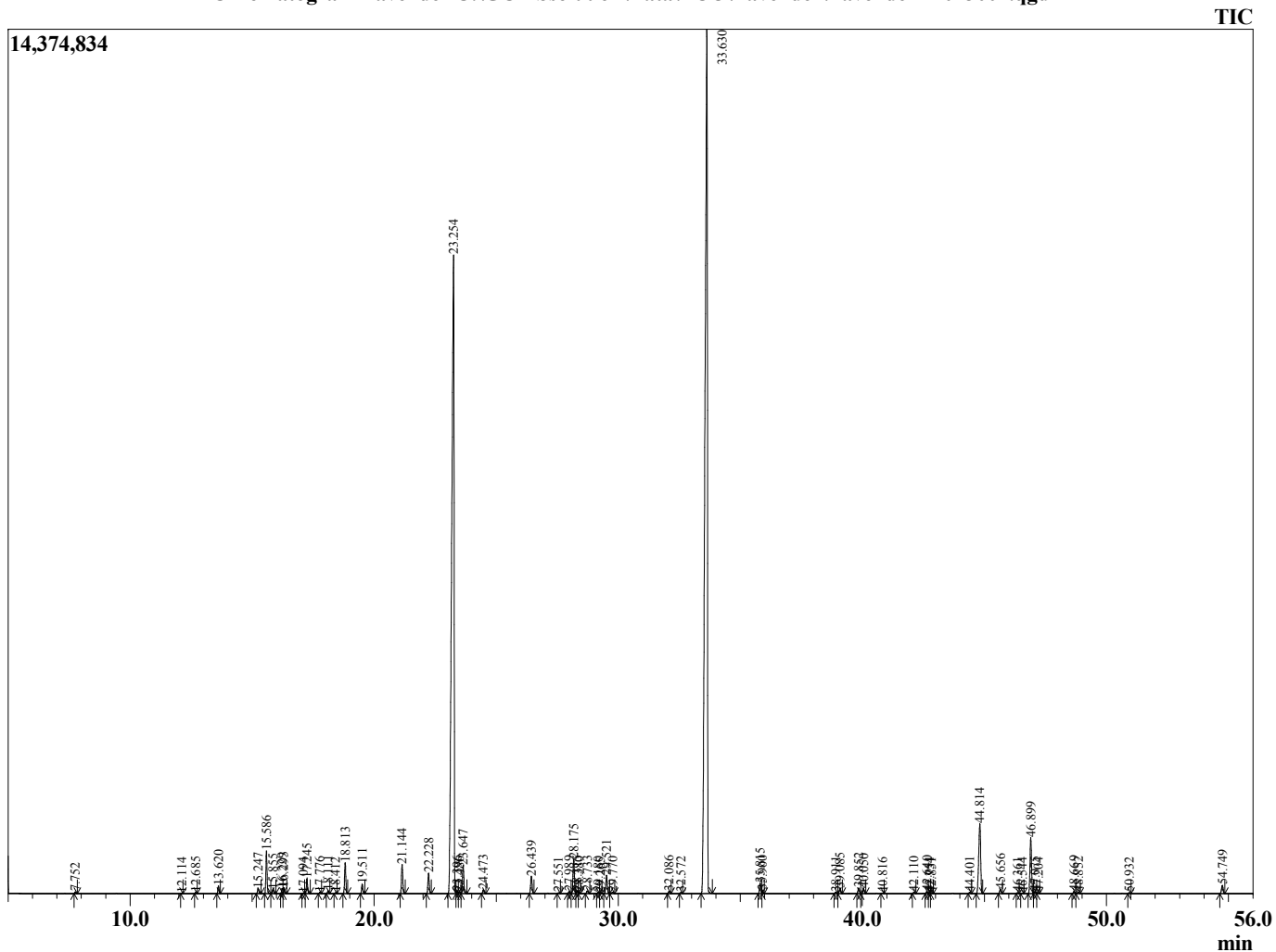
Analyzed by : Dr. Robert S. Pappas
 Analyzed : 8/19/2014 9:05:59 AM
 Sample Type : Essential Oil
 Sample Name : Lavender
 Sample ID : 14043001
 Injection Volume : 0.10
 Data File : C:\GCMSsolution\Data\EOU\Lavender\Lavender 14043001.qgd



Peak Report TIC

R.Time	Name	Area%
7.752	Hexane, 1-methoxy-	0.04
12.114	Cyclofenchene	0.01
12.685	Pinene <alpha>	0.03
13.620	Camphene	0.20
15.247	1-Octen-3-ol	0.16
15.586	3-Octanone	1.18
15.855	Myrcene	0.13
16.229	Butyl butanoate	0.14
16.293	3-Octanol	0.17
17.094	Carene <delta-3>	0.02
17.245	Hexyl acetate	0.42
17.776	Cymene <ortho>	0.04
18.111	Cymene <para>	0.08
18.412	Limonene	0.03
18.813	Ocimene <Z-beta>	0.91
19.511	Ocimene <E-beta>	0.28
21.144	Linalool oxide <cis-(furanoid)>	0.88
22.228	Linalool oxide <trans-(pyranoid)>	0.64
23.254	Linalool	35.25
23.396	Hotrienol	0.08
23.486	Propionate <hexyl>	0.05
23.647	Octen-3-yl acetate<1>	0.88
24.473	3-Octyl acetate	0.12
26.439	Camphor	0.58
27.551	Lavandulol.	0.02
27.989	Linalool oxide<Z-pyranoid>	0.06
28.175	Borneol	1.14
28.315	Linalool oxide <E-pyranoid>	0.09
28.380	Undecatriene <(3E,5Z)-1,3,5>	0.04
28.733	p-cymen-8-ol	0.10
29.180	Cymen-8-ol<p>	0.05
29.265	Hexenyl butyrate <3Z>	0.01
29.521	Hexyl butanoate	0.62
29.770	Decanol<3>	0.05
32.086	Bornyl formate	0.07
32.572	Hexyl <2-methyl butanoate-n>	0.04
33.630	Linalyl acetate	48.29
35.815	Lavandulyl acetate	0.36
35.900	Bornyl acetate	0.07
38.911	Hexyl tiglate	0.05
39.085	Terpendiol	0.17
39.852	Unidentified	0.19
40.050	Unidentified	0.16
40.816	Neryl acetate	0.02
42.110	Geranyl acetate	0.04
42.640	Hexyl hexanoate	0.06
42.754	Sesquithujene <7-epi>	0.03
42.831	Unidentified	0.02
44.401	Bergamotene <cis-alpha>	0.04
44.814	Caryophyllene <trans>	3.16
45.656	Bergamotene <trans-alpha>	0.15
46.361	Farnesene <Z-beta>	0.03
46.544	Santalene-beta-epi	0.02
46.899	Farnesene <(E)-, beta->	1.98
47.075	Humulene <alpha>	0.06
47.204	Sesquisabinene	0.02
48.669	Germacrene D	0.07
48.852	Farnesene isomer	0.04
50.932	Ionone <6-methyl-alpha>	0.03
54.749	Caryophyllene oxide	0.31
		100.00

Chromatogram Lavender C:\GCMSsolution\Data\EOU\Lavender\Lavender 14043001.qgd



Comments:

Typical Ranges of Main Components: