

Sample Information

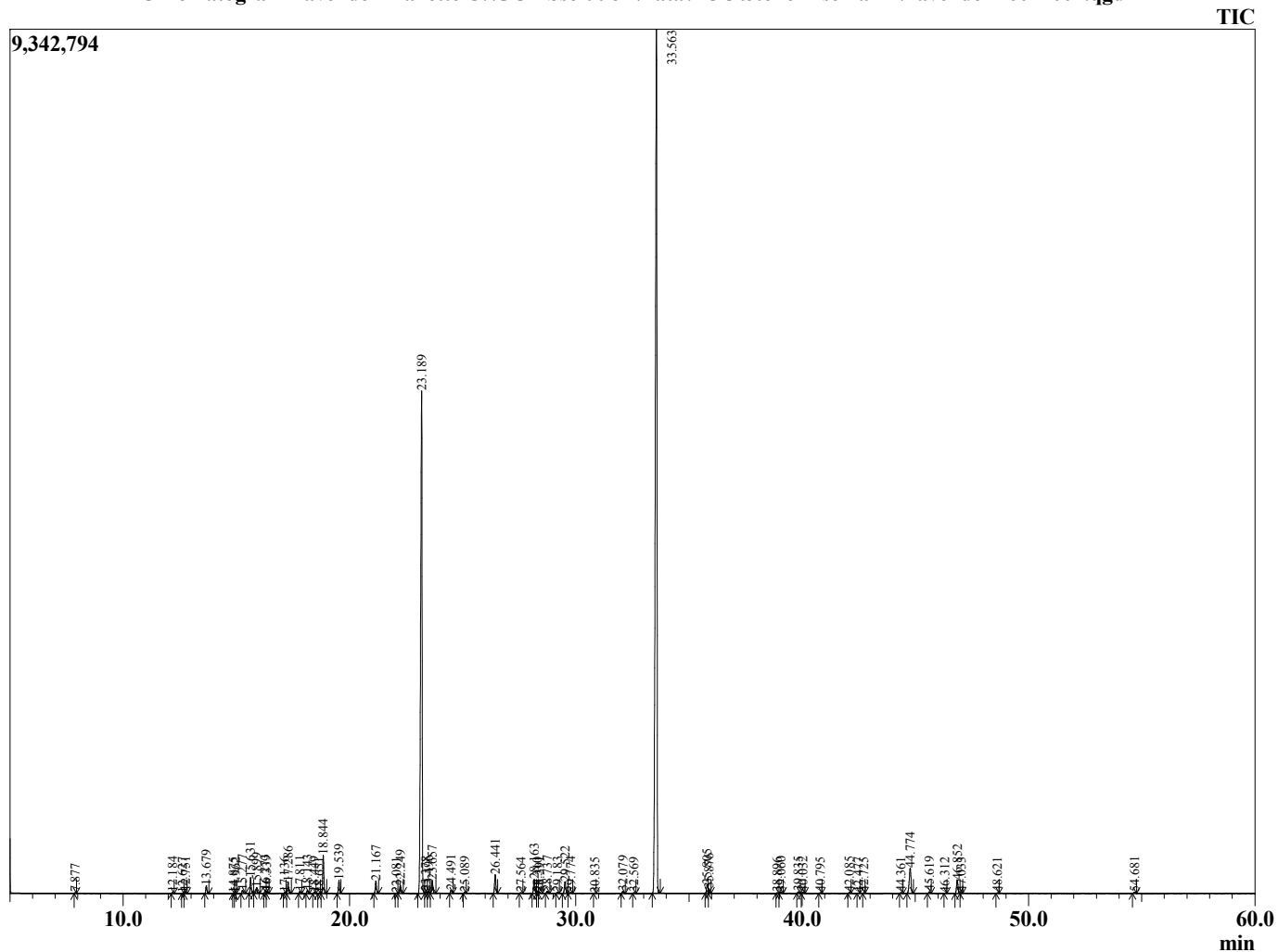
Analyzed by : Dr. Prabodh Satyal
 Analyzed : 8/17/16 2:18:44 PM
 Sample Type : Essential Oil
 Sample Name : Lavender Maillette
 Sample ID : 16071001
 Injection Volume : 0.20
 Data File : C:\GCMSsolution\Data\EOU\Stone Rise Farm\Lavender 16071001.qgd



Peak Report TIC

R.Time	Name	Area%
7.877	Hexane, 1-methoxy-	0.03
12.184	Tricyclene	0.04
12.627	2-Methyl-5-isopropenylfuran	0.02
12.751	Pinene<alpha->	0.07
13.679	Camphene	0.33
14.875	1,3,5-Cycloheptatriene, 3,7,7-trimethyl-	0.01
14.962	Sabinene	0.02
15.277	Pinene<beta->	0.17
15.631	Octanone<3->	0.70
15.899	Myrcene	0.27
16.273	Butyl butanoate	0.16
16.339	3-Octanol	0.10
17.136	Carene<delta-3->	0.04
17.286	Hexyl acetate	0.54
17.811	Cymene<para->	0.09
18.143	Cymene<para->	0.15
18.449	Limonene	0.07
18.651	1,8-cineole	0.02
18.844	Ocimene<(Z)-beta->	1.78
19.539	Ocimene<(E)-beta->	0.61
21.167	Linalool oxide <cis-> (furanoid)	0.61
22.081	Camphenilone	0.03
22.249	Linalool oxide <trans-(furanoid)>	0.41
23.189	Linalool	29.64
23.378	Hotrienol	0.09
23.496	Hexyl propanoate	0.12
23.657	Octen-3-yl acetate<1->	0.67
24.491	Octanol acetate<3->	0.17
25.089	Ocimene <allo>	0.05
26.441	Camphor	0.97
27.564	Lavandulol	0.03
28.163	Borneol	0.75
28.310	Linalool oxide <E-pyranoid>	0.03
28.391	Undecatriene <(3E,5Z)-1,3,5>	0.08
28.737	Cymen-8-ol<meta->	0.12
29.183	Cymen-8-ol<para->	0.05
29.522	Hexyl butanoate	0.64
29.774	Terpineol<alpha->	0.06
30.835	Octyl acetate	0.02
32.079	Bornyl formate	0.11
32.569	Hexyl 2-methyl butanoate	0.04
33.563	Linalyl acetate	56.22
35.805	Lavandulyl acetate	0.50
35.876	Bornyl acetate	0.18
38.896	Hexyl tiglate	0.03
39.060	Terpendiol	0.07
39.835	Peroxylinallyl acetate A	0.08
40.032	Peroxylinallyl acetate B	0.07
40.795	Neryl acetate	0.04
42.085	Geranyl acetate	0.05
42.477	Bourbonene <alpha->	0.02
42.725	Sesquithujene<7-epi->	0.02
44.361	Bergamotene<alpha-cis->	0.04
44.774	Caryophyllene <trans->	1.76
45.619	Bergamotene<alpha-trans->	0.09
46.312	Isocaryophyllene	0.02
46.852	Farnesene<(E)-beta->	0.78
47.033	Humulene <alpha->	0.03
48.621	Germacrene D	0.03
54.681	Caryophyllene oxide	0.08
		100.00

Chromatogram Lavender Maillette C:\GCMSsolution\Data\EOU\Stone Rise Farm\Lavender 16071001.qgd



Comments:

Typical Ranges of Main Components: