

Sample Information

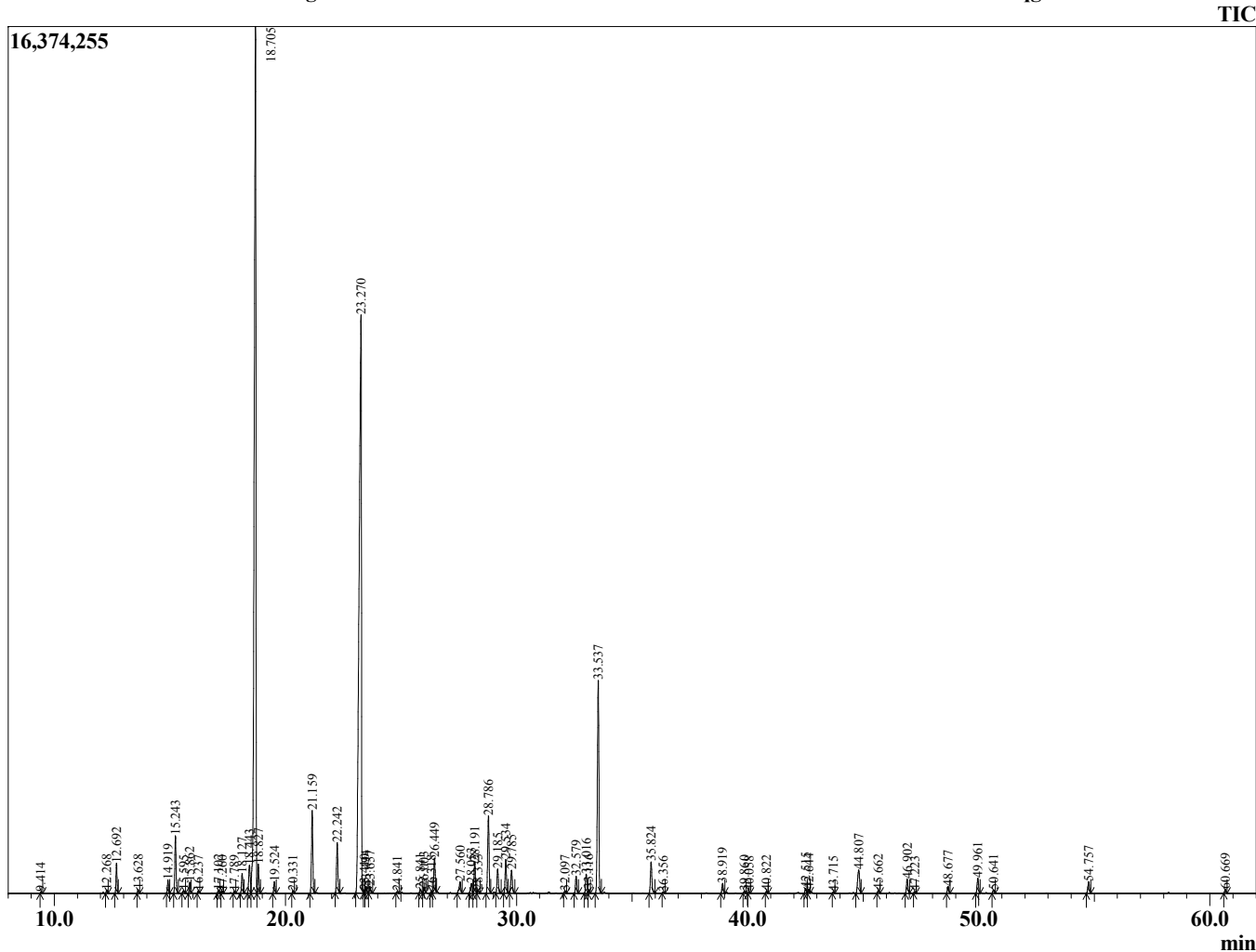
Analyzed by : Dr. Robert S. Pappas
 Analyzed : 8/19/2014 3:19:12 AM
 Sample Type : Essential Oil
 Sample Name : Lavandin
 Sample ID : 14039001
 Injection Volume : 0.10
 Data File : C:\GCMSsolution\Data\EOU\Lavandin\Lavandin 14039001.qgd



Peak Report TIC

R.Time	Name	Area%
9.414	Hexanol <n>	0.03
12.268	Thujene <alpha>	0.08
12.692	Pinene <alpha>	0.73
13.628	Camphene	0.09
14.919	Sabinene	0.33
15.243	Octen-3-ol+Pinene<beta>	1.71
15.595	3-Octanone	0.09
15.862	Myrcene	0.30
16.237	Butyl butanoate	0.06
17.102	3-Carene	0.10
17.260	Hexyl acetate	0.06
17.789	Cymene <para>	0.06
18.127	Cymene <para>	0.58
18.443	Limonene	1.02
18.705	Cineole <1.8>	35.05
18.827	Ocimene <Z-beta>	0.83
19.524	Ocimene <E-beta>	0.33
20.331	Terpinene <gamma>	0.07
21.159	Linalool oxide <cis-(furanoid)>	2.56
22.242	Linalool oxide <trans-(pyranoid)>	1.53
23.270	Linalool	31.45
23.410	Hotrienol	0.09
23.494	Propionate <hexyl>	0.19
23.657	Octen-3-yl acetate<1>	0.20
24.841	Menth-2-en-1-ol <cis-p>	0.06
25.841	Nopinone.	0.13
26.003	Pinocarveol <trans(-)>	0.15
26.318	Verbenol	0.07
26.449	Hexyl isobutyrate+Camphor	1.12
27.560	Lavandulol	0.46
28.053	Terpineol <delta>	0.39
28.191	Borneol	1.01
28.333	Linalool oxide <E-pyranoid>	0.12
28.786	Terpinen-4-ol	2.56
29.185	Cryptone	0.81
29.534	Hexyl butanoate	1.06
29.785	Terpineol <alpha>	0.82
32.097	Bornyl formate	0.07
32.579	Hexyl <2-methyl butanoate-n>	0.55
33.016	Hexyl isovalerate	0.65
33.116	Carvone	0.10
33.537	Linalyl acetate	7.24
35.824	Lavandulyl acetate	1.10
36.356	Cuminol.	0.04
38.919	Hexyl tiglate	0.32
39.860	Unidentified	0.06
40.058	Unidentified	0.05
40.822	Neryl acetate	0.06
42.515	Bourbonene <alpha>	0.15
42.644	Hexyl hexanoate	0.12
43.715	Sesquithujene	0.04
44.807	Caryophyllene <trans>	1.10
45.662	Bergamotene <trans-alpha>	0.10
46.902	Farnesene <(E)-, beta>	0.49
47.223	Neryl-propanoate	0.04
48.677	Germacrene D	0.22
49.961	Lavandulyl isovalerate <ent>	0.51
50.641	Amorphene <delta>	0.11
54.757	Caryophyllene oxide	0.43
60.669	Bisabolol <alpha>	0.12
		100.00

Chromatogram Lavandin C:\GCMSsolution\Data\EOU\Lavandin\Lavandin 14039001.qgd



Comments:

Typical Ranges of Main Components: