

Sample Information

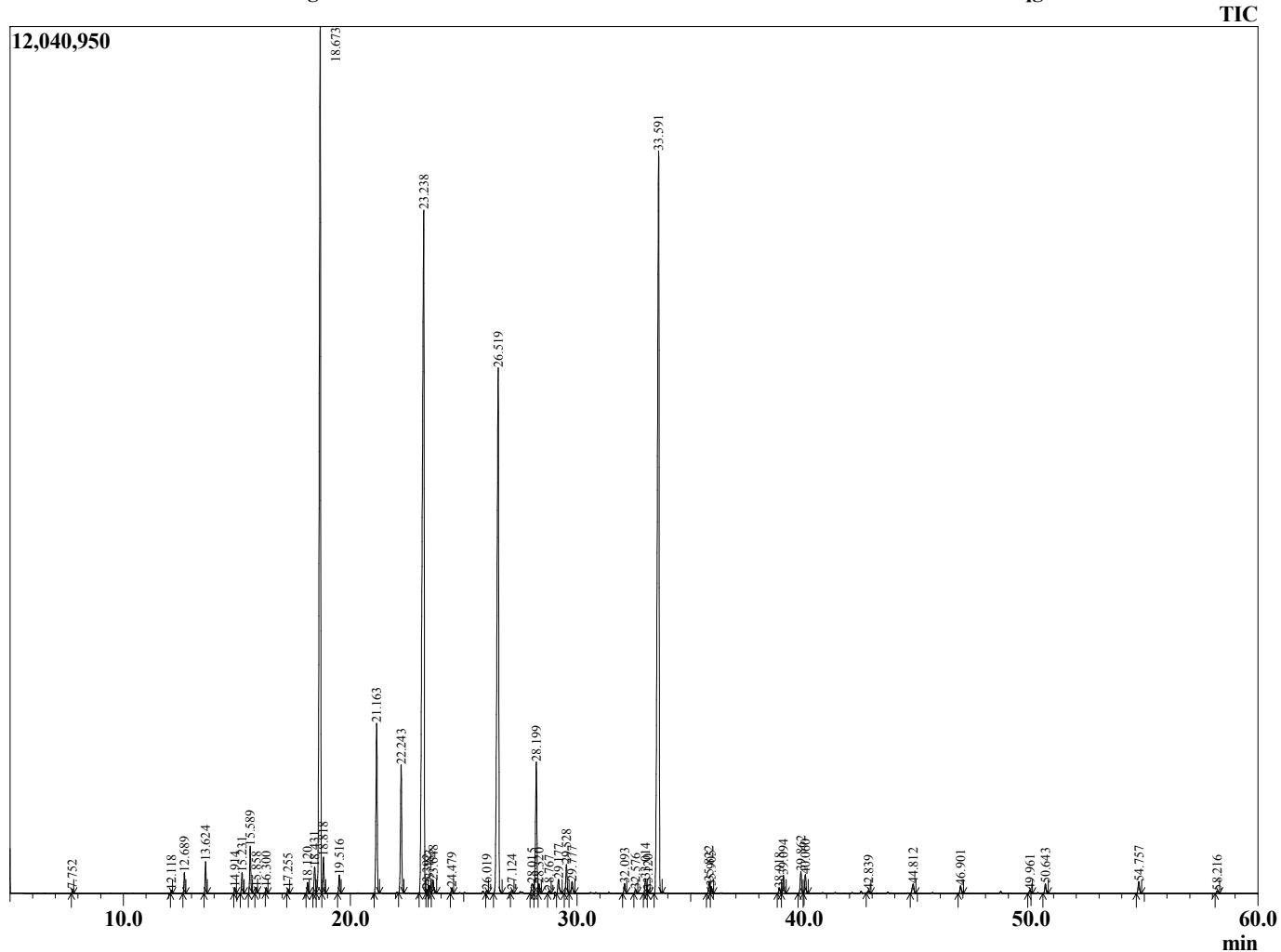
Analyzed by : Dr. Robert S. Pappas
 Analyzed : 8/19/2014 12:44:59 PM
 Sample Type : Essential Oil
 Sample Name : Lavandin
 Sample ID : 14037001
 Injection Volume : 0.10
 Data File : C:\GCMSsolution\Data\EOU\Lavandin\Lavandin 14037001.qgd



Peak Report TIC

| R.Time | Name | Area% |
|--------|-----------------------------------|--------|
| 7.752 | Hexane, 1-methoxy- | 0.06 |
| 12.118 | Tricyclene | 0.05 |
| 12.689 | Pinene <alpha> | 0.34 |
| 13.624 | Camphene | 0.55 |
| 14.914 | Sabinene | 0.10 |
| 15.231 | Pinene <beta> | 0.38 |
| 15.589 | 3-Octanone | 0.86 |
| 15.858 | Myrcene | 0.09 |
| 16.300 | Octanol <3> | 0.09 |
| 17.255 | Hexyl acetate | 0.08 |
| 18.120 | Cymene <para> | 0.21 |
| 18.431 | Limonene | 0.58 |
| 18.673 | Cineole <1,8> | 20.43 |
| 18.818 | Ocimene <Z-beta> | 0.73 |
| 19.516 | Ocimene <E-beta> | 0.35 |
| 21.163 | Linalool oxide <cis-(furanoid)> | 3.62 |
| 22.243 | Linalool oxide <trans-(pyranoid)> | 2.67 |
| 23.238 | Linalool | 22.49 |
| 23.392 | Hotrienol | 0.07 |
| 23.483 | Propionate <hexyl> | 0.16 |
| 23.648 | Octen-3-yl acetate<1> | 0.28 |
| 24.479 | 3-Octyl acetate | 0.12 |
| 26.019 | Pinocarveol <trans-(-)> | 0.06 |
| 26.519 | Camphor | 14.89 |
| 27.124 | ULavenderA | 0.07 |
| 28.015 | Linalool oxide<Z-pyranoid> | 0.31 |
| 28.199 | Borneol | 3.04 |
| 28.320 | Linalool oxide <E-pyranoid> | 0.20 |
| 28.767 | Terpinen-4-ol | 0.06 |
| 29.177 | Cryptone | 0.35 |
| 29.528 | Hexyl butanoate | 0.63 |
| 29.777 | Terpineol <alpha> | 0.30 |
| 32.093 | Bornyl formate | 0.22 |
| 32.576 | Hexyl <2-methyl butanoate-n> | 0.09 |
| 33.014 | Hexyl isovalerate | 0.34 |
| 33.120 | Carvone | 0.07 |
| 33.591 | Linalyl acetate | 22.06 |
| 35.822 | Lavandulyl acetate | 0.28 |
| 35.905 | Bornyl acetate | 0.14 |
| 38.918 | Hexyl tiglate | 0.13 |
| 39.094 | Terpendiol | 0.40 |
| 39.862 | Unidentified | 0.49 |
| 40.060 | Unidentified | 0.42 |
| 42.839 | Citral<drvrv> | 0.05 |
| 44.812 | Caryophyllene <trans> | 0.28 |
| 46.901 | Farnesene <(E)-, beta> | 0.18 |
| 49.961 | Lavandulyl isovalerate <ent> | 0.08 |
| 50.643 | Amorphe <delta> | 0.22 |
| 54.757 | Caryophyllene oxide | 0.29 |
| 58.216 | Muurolol <alpha-epi> | 0.06 |
| | | 100.00 |

Chromatogram Lavandin C:\GCMSsolution\Data\EOU\Lavandin\Lavandin 14037001.qgd



Comments:

Typical Ranges of Main Components: