

Sample Information

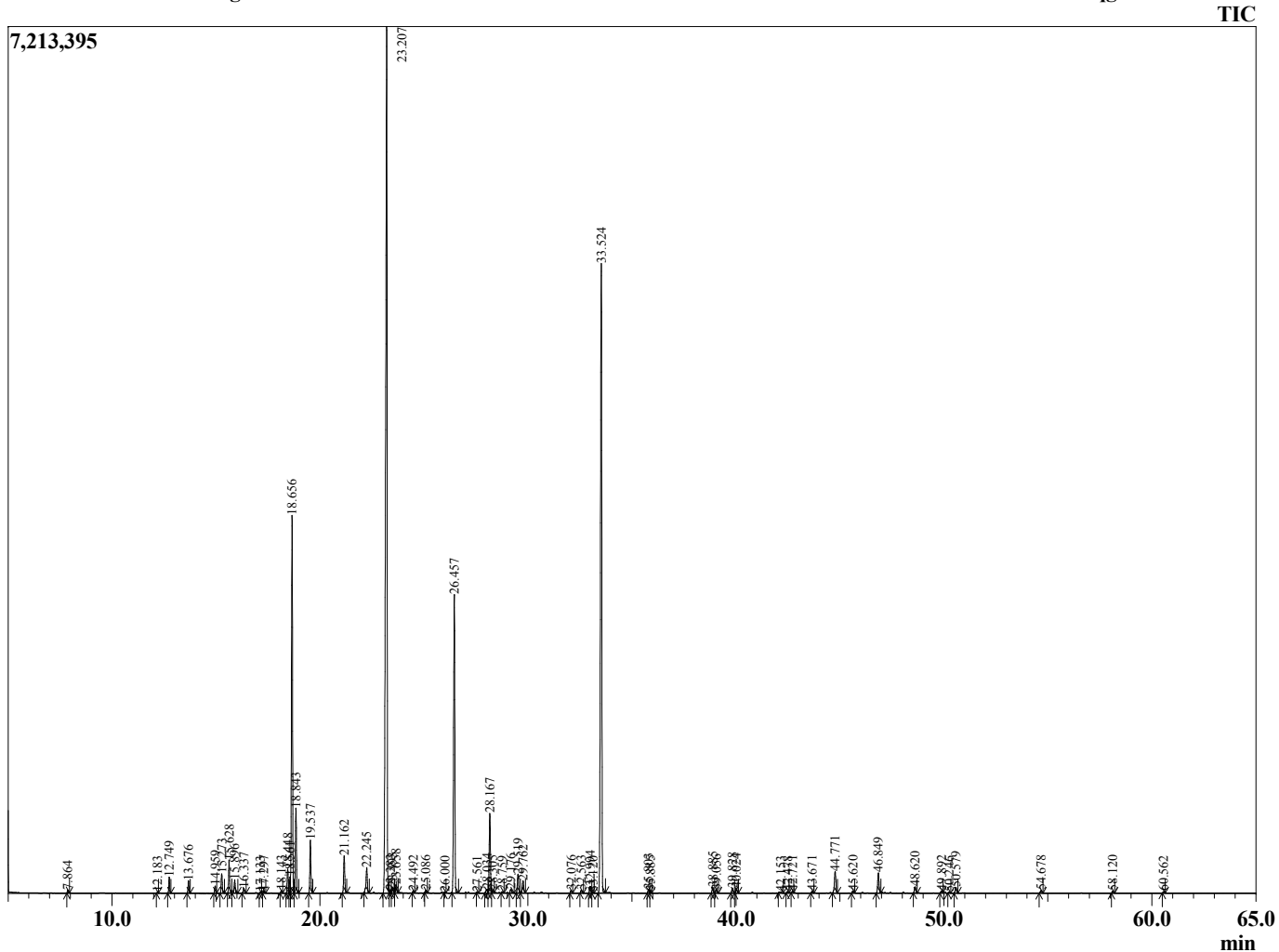
Analyzed by : Dr. Prabodh Satyal
 Analyzed : 8/17/16 8:00:14 AM
 Sample Type : Essential Oil
 Sample Name : Lavandin Soumian
 Sample ID : 16078001
 Injection Volume : 0.20
 Data File : C:\GCMSsolution\Data\EOU\Stone Rise Farm\Lavandin 16078001.qgd



Peak Report TIC

R.Time	Name	Area%
7.864	Hexane, 1-methoxy-	0.07
12.183	Tricyclene	0.03
12.749	Pinene<alpha->	0.40
13.676	Camphene	0.33
14.959	Sabinene	0.20
15.273	Pinene<beta->	0.59
15.628	Octanone<3->	0.92
15.896	Myrcene	0.40
16.337	Octanol<3->	0.16
17.133	Carene<delta-3->	0.03
17.297	Hexyl acetate	0.07
18.143	Cymene<para->	0.08
18.448	Limonene	0.74
18.561	Phellandrene <beta>	0.39
18.656	Cineole<1,8->	11.41
18.843	Ocimene<(Z)-beta->	2.49
19.537	Ocimene<(E)-beta->	1.56
21.162	Linalool oxide <cis> (furanoid)	1.22
22.245	Linalool oxide <trans>(furanoid)>	0.92
23.207	Linalool	36.20
23.383	Hotrienol	0.10
23.493	Hexyl propanoate	0.17
23.658	Octen-3-yl acetate<1->	0.25
24.492	3-Octyl acetate	0.07
25.086	Ocimene <allo>	0.07
26.000	Pinocarveol<trans->	0.02
26.457	Camphor	10.15
27.561	Lavandulol	0.03
28.034	Terpineol <delta>	0.18
28.167	Borneol	2.66
28.305	Linalool oxide<cis->(pyanoid)	0.08
28.759	Terpinen-4-ol	0.04
29.176	Cryptone+Cymenol	0.15
29.519	Hexyl butanoate	0.63
29.762	Terpineol<alpha->	0.44
32.076	Bornyl formate	0.09
32.563	Hexyl 2-methyl butanoate	0.09
32.994	Hexyl isovalerate	0.25
33.120	Carvone	0.03
33.524	Linalyl acetate	22.82
35.803	Lavandulyl acetate	0.14
35.885	Bornyl acetate	0.05
38.885	Hexyl tiglate	0.21
39.056	Terpendiol	0.12
39.828	Peroxylinallyl acetate A	0.18
40.024	Peroxylinallyl acetate B	0.16
42.153	Daucene	0.07
42.478	Bourbonene <alpha>	0.05
42.721	Sesquithujene<7-epi->	0.04
43.671	Sesquithujene	0.06
44.771	Caryophyllene <trans>	0.88
45.620	Bergamotene<alpha-trans->	0.06
46.849	Farnesene<(E)-beta->	0.73
48.620	Germacrene D	0.23
49.892	Lavandulyl isovalerate <ent>	0.07
50.246	Exo-bornyl isovalerate	0.03
50.579	Amorphene <delta>	0.22
54.678	Caryophyllene oxide	0.11
58.120	Cadinol <epi-alpha>	0.07
60.562	Bisabolol<alpha->	0.04
		100.00

Chromatogram Lavandin Soumian C:\GCMSsolution\Data\EOU\Stone Rise Farm\Lavandin 16078001.qgd



Comments:

Typical Ranges of Main Components: