

Sample Information

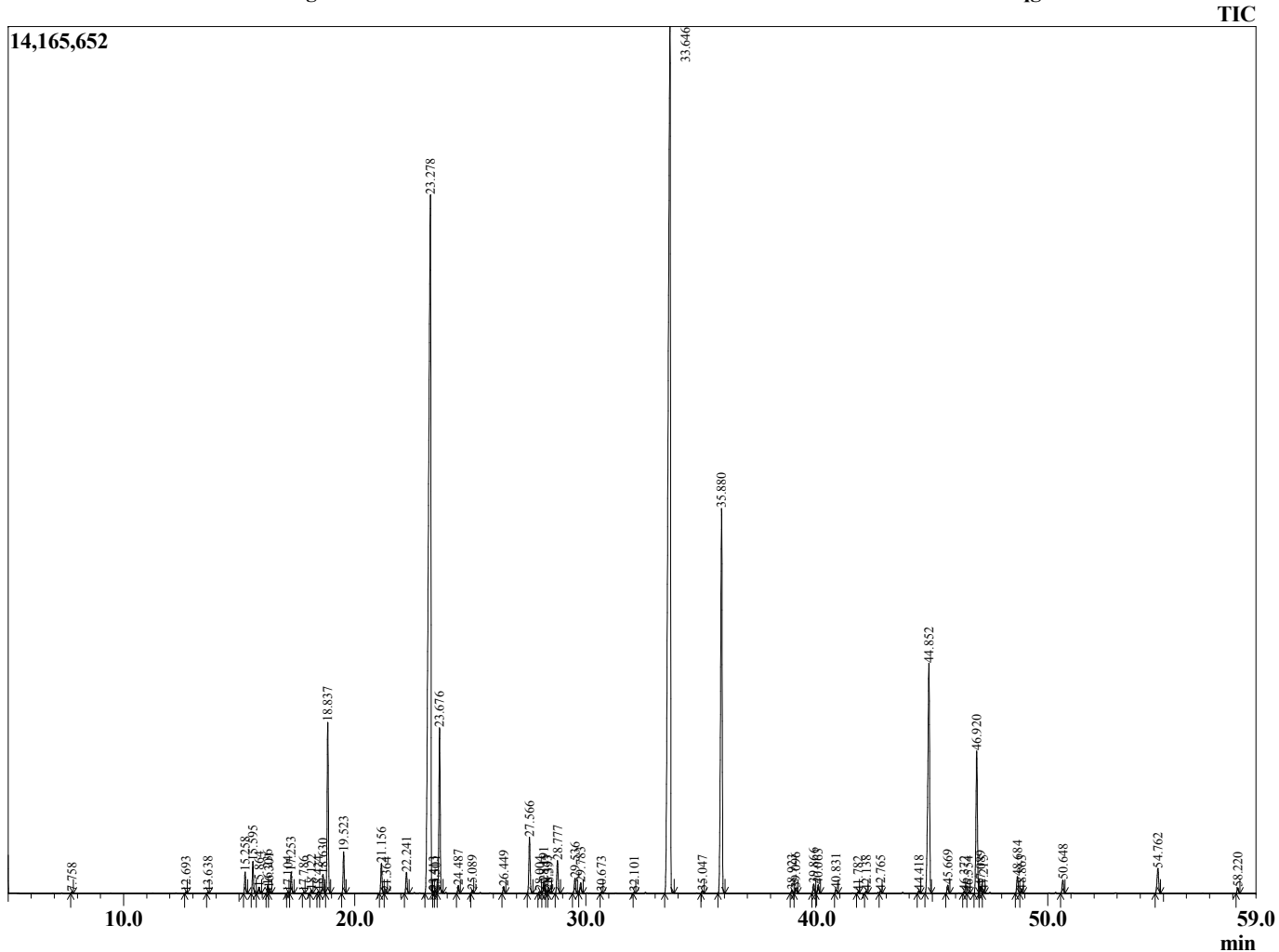
Analyzed by : Dr. Robert S. Pappas
 Analyzed : 8/18/2014 7:36:49 PM
 Sample Type : Essential Oil
 Sample Name : Lavender
 Sample ID : 14041001
 Injection Volume : 0.10
 Data File : C:\GCMSsolution\Data\EOU\Lavandin\Lavander 14041001.qgd



Peak Report TIC

R.Time	Name	Area%
7.758	Hexane, 1-methoxy-	0.02
12.693	Pinene <alpha>	0.02
13.638	Camphene+Isobutyrate butyl	0.02
15.258	1-Octen-3-ol	0.40
15.595	3-Octanone	0.61
15.864	Myrcene	0.12
16.236	Butyl butanoate	0.15
16.301	3-Octanol	0.09
17.104	Carene <delta-3>	0.02
17.253	Hexyl acetate	0.41
17.786	Cymene <ortho>	0.02
18.122	Cymene <ortho>	0.06
18.424	Limonene	0.03
18.630	Cineole <1,8>	0.38
18.837	Ocimene <Z-beta>	3.52
19.523	Ocimene <E-beta>	0.84
21.156	Linalool oxide <cis-(furanoid)>	0.63
21.364	Unidentified	0.02
22.241	Linalool oxide <trans-(pyranoid)>	0.46
23.278	Linalool	27.66
23.413	Unidentified	0.04
23.501	Propionate <hexyl>	0.04
23.676	Octen-3-yl acetate<1>	3.61
24.487	3-Octyl acetate	0.16
25.089	Ocimene <allo>	0.06
26.449	Hexyl isobutyrate+Camphor	0.15
27.566	Lavandulol	1.25
28.004	Linalool oxide<Z-pyranoid>	0.04
28.191	Borneol	0.26
28.333	Linalool oxide <E-pyranoid>	0.06
28.397	Undecatriene <(3E,5Z)-1,3,5>	0.07
28.777	Terpinen-4-ol	0.78
29.536	Hexyl butanoate	0.35
29.783	Terpineol <alpha>	0.24
30.673	Octenyl acetate <3E>	0.02
32.101	Bornyl-formate	0.02
33.646	Linalyl acetate	33.72
35.047	Isopulegyl acetate.	0.05
35.880	Lavandulyl acetate	10.18
38.923	Hexyl tiglate	0.07
39.096	Terpendiol	0.11
39.866	Unidentified	0.22
40.063	Unidentified	0.20
40.831	ULavenderA	0.09
41.782	ULavenderA	0.03
42.138	ULavenderA	0.06
42.765	Sesquithujene <7-epi>	0.07
44.418	Bergamotene <cis-alpha>	0.05
44.852	Caryophyllene <trans>	6.84
45.669	Bergamotene <trans-alpha>	0.20
46.372	Farnesene <Z-beta>	0.04
46.554	Santalene-beta-epi	0.02
46.920	Farnesene<(E)-beta>	3.57
47.089	Humulene <alpha>	0.18
47.215	Farnesene<(E)-beta>	0.04
48.684	Germacrene D	0.42
48.863	Farnesene isomer	0.06
50.648	Amorphene <delta>	0.32
54.762	Caryophyllene oxide	0.69
58.220	Cadinol <epi-alpha>	0.13
		100.00

Chromatogram Lavender C:\GCMSsolution\Data\EOU\Lavandin\Lavander 14041001.qgd



Comments:

Typical Ranges of Main Components:

