

Sample Information

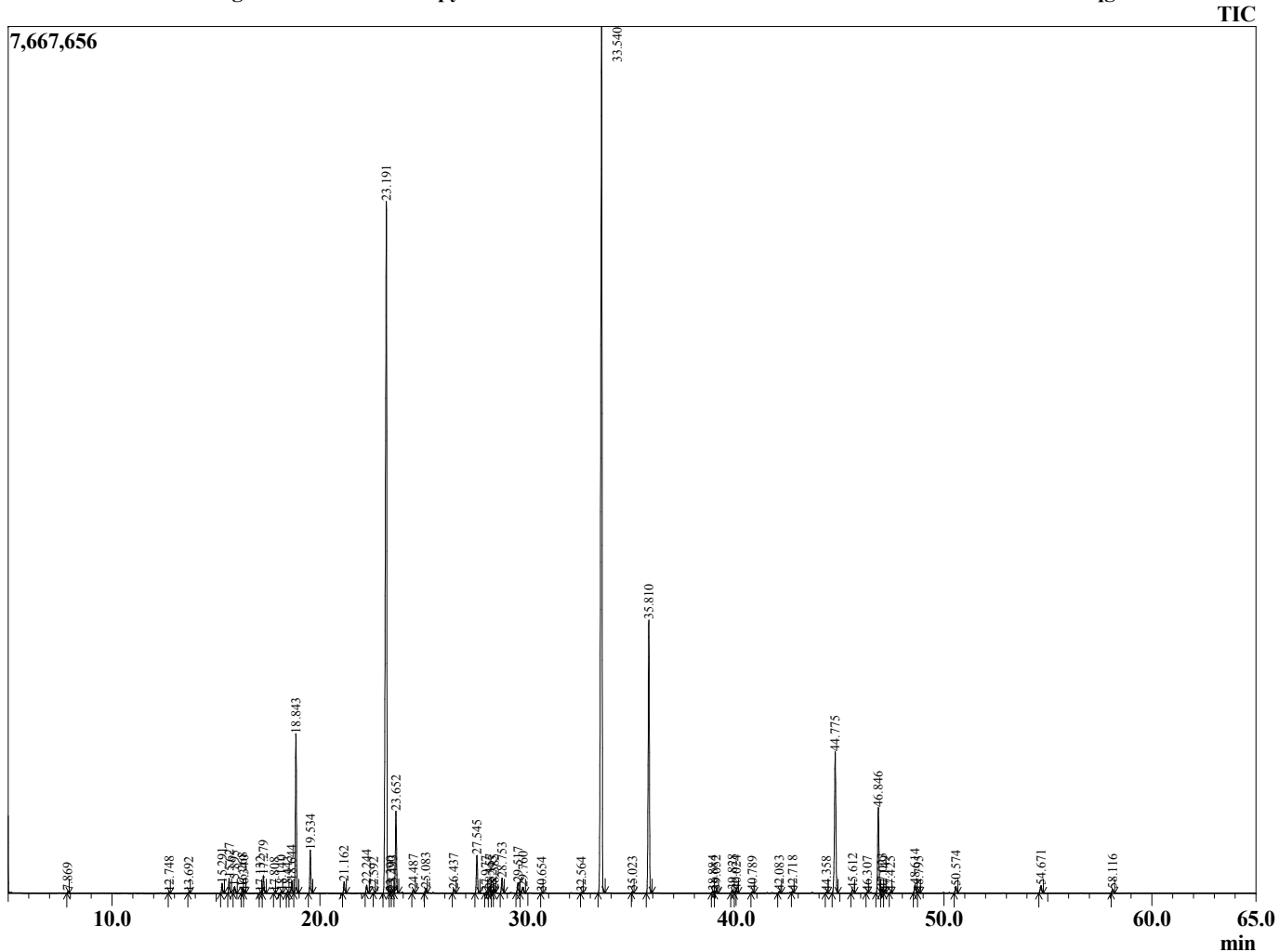
Analyzed by : Dr. Prabodh Satyal
 Analyzed : 8/18/16 6:27:43 AM
 Sample Type : Essential Oil
 Sample Name : Lavender Swampy
 Sample ID : 16073001
 Injection Volume : 0.20
 Data File : C:\GCMSsolution\Data\EOU\Stone Rise Farm\Lavender 16073001.qgd



Peak Report TIC

R.Time	Name	Area%
7.869	Hexane, 1-methoxy-	0.03
12.748	Pinene<alpha->	0.03
13.692	Camphene+Isobutyrate butyl	0.03
15.291	Octen-3-ol.	0.29
15.627	Octanone<3->	0.44
15.895	Myrcene	0.20
16.268	Butyl butanoate	0.16
16.340	3-Octanol	0.06
17.132	Carene<delta-3->	0.04
17.279	Hexyl acetate	0.55
17.808	Cymene <ortho->	0.02
18.140	Cymene<para->	0.06
18.443	Limonene	0.05
18.644	Cineole<1,8->	0.39
18.843	Ocimene<(Z)-beta->	4.89
19.534	Ocimene<(E)-beta->	1.35
21.162	Linalool oxide <cis-> (furanoid)	0.39
22.244	Linalool oxide <trans-(furanoid)>	0.27
22.592	Rosefuran	0.01
23.191	Linalool	28.38
23.390	Hotrienol	0.05
23.493	Hexyl propanoate	0.08
23.652	Octen-3-yl acetate<1->	2.72
24.487	Octanol acetate<3->	0.12
25.083	Ocimene <allo>	0.16
26.437	Hexyl isobutyrate+Camphor	0.15
27.545	Lavandulol	1.31
27.977	Linalool oxide<cis->(pyranoid)	0.03
28.157	Borneol	0.13
28.295	Linalool oxide<trans->(pyanoid)	0.03
28.385	Undecatriene <(3E,5Z)-1,3,5->	0.08
28.753	Terpinen-4-ol	0.55
29.517	Hexyl butanoate	0.38
29.760	Terpineol<alpha->	0.23
30.654	Octenyl acetae <3E>	0.02
32.564	Hexyl 2-methyl butanoate	0.02
33.540	Linalyl acetate	35.10
35.023	Isopulegyl acetate<neo->	0.04
35.810	Lavandulyl acetate	9.92
38.884	Hexyl tiglate	0.06
39.052	Terpendiol	0.09
39.828	Peroxylinallyl acetate A	0.12
40.024	Peroxylinallyl acetate B	0.11
40.789	Neryl acetate	0.05
42.083	Geranyl acetate	0.06
42.718	Sesquithujene<7-epi->	0.04
44.358	Bergamotene<alpha-cis->	0.04
44.775	Caryophyllene <trans>	5.85
45.612	Bergamotene<alpha-trans->	0.15
46.307	Isocaryophyllene	0.03
46.846	Farnesene<(E)-beta->	3.28
47.023	Humulene <alpha->	0.16
47.149	Sesquisabinene	0.04
47.425	Cadina-1(6),4-diene<cis->	0.02
48.614	Germacrene D	0.33
48.795	Neryl isobutanoate	0.05
50.574	Amorphene <delta>	0.28
54.671	Caryophyllene oxide	0.33
58.116	Cadinol <epi-alpha>	0.15
		100.00

Chromatogram Lavender Swampy C:\GCMSsolution\Data\EOU\Stone Rise Farm\Lavender 16073001.qgd



Comments:

Typical Ranges of Main Components: